

Caribbean Contesting Consortium 2018 PJ2T Station Report



Jeff Maass K8ND / PJ2ND
Station Strategic Planning Lead



Topics

- PJ2T Towers
- Broken Feedline Messenger Replacement
- PJ2T 2-Meter Moonbounce / EME By KB7Q
- PJ2T Remote Station – Future Improvements
- Online PJ2T Videos
- Miscellaneous 2017-18 Photos



PJ2T Towers



Some drone photos of Geoff W0CG / PJ2DX on the PJ2T USA/JA Tower.



PJ2T Towers

Here's one of the leg holes on the USA/JA tower in February. This is just below the 20 meter boom on the upwind side of the leg, the salt side of course. This spot was under a wad of rope that has been tied there for many years.



2018 PJ2T Station Report

A couple of WB9Z leg splint kits, with stainless hardware provided by N4RV and painted with multiple coats of epoxy applied by K2PLF. These are applied at the leg holes to reinforce the tower leg.



PJ2T Towers



Broken zig-zag on the Europe tower.



Fresh paint on the US/JA tower.



Rusty tower diagonal.

2018 PJ2T Station Report



Cross-bar prepared for new paint.



Support rope abraded by tree limb.



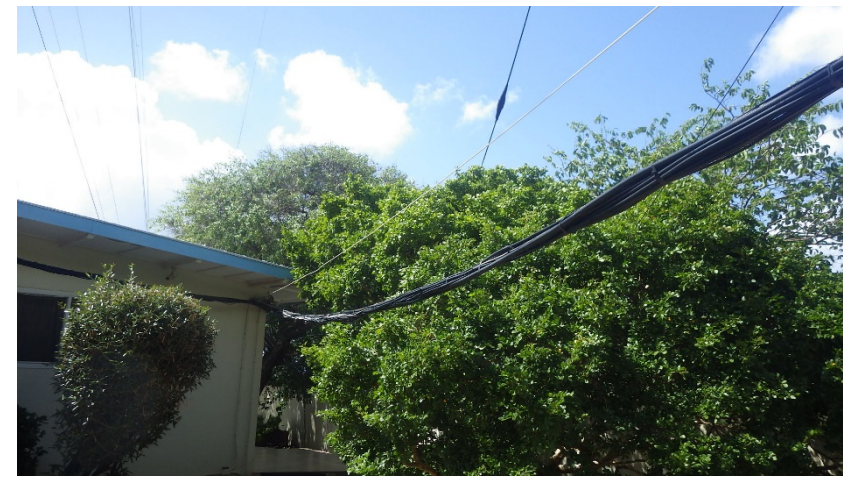
Broken Feedline Messenger Replacement



Dorothy and Geoff applied coats of epoxy paint to the new ¼-inch EHS messenger cable before stringing it from house to WARC tower.



Photo shows the new deadend and thimble at the house. The clevis bolt goes all the way through the wall with a nut and washer above the radio closet.



Note the sag and strain on the actual cables (feedlines) before securing to the messenger.



Part way through attachment process, working toward the WARC tower.



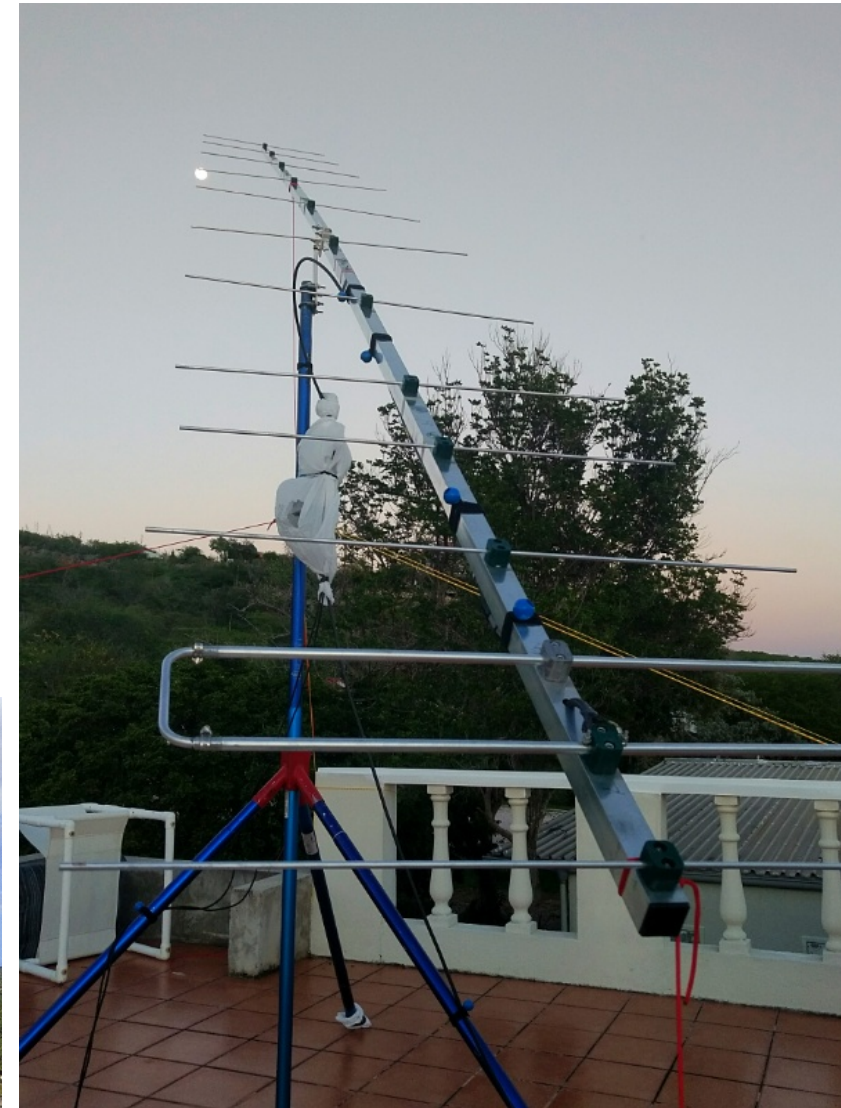
Each point gets two UV-resistant tie wraps, then the tie wraps must be covered by Scotch 33 tape. In Curacao, "UV resistant" means about six months. With the tape they will last indefinitely.



Finished. This used a lot of material and time!! But it will outlast all of us. The original messenger was 3/16 inch only and was not coated prior to installation. This is a much better, permanent fix



PJ2T 2-Meter Moonbounce / EME By KB7Q



Gene KB7Q operated PJ2T on 2-meter Moonbounce (EME) in February/March for a total of 239 contacts!

NOTE: Jim W8WTS had previously done 6-meter Moonbounce from the station.



PJ2T
2 Meter EME
Curacao FK52kg
Op. KB7Q



Remote Station – Future Improvements

We have made some inroads with contesting remotely and had a great deal of fun in casual operating as well. There are, however, some improvements that could enhance the experience of operating the station. These will not be expensive to implement.

1. Adding the ability to select transmit antennas remotely. Currently, someone at the station must select the antenna to be used, and then change it if a band change is desired or if propagation changes.
2. Adding the ability to change receive antennas when needed.



Recent additions to the PJ2T remote station are Elecraft KPA500 500-watt amplifier and KAT500 automatic antenna tuner which will be put into service in the 2018-19 season.



Caribbean Contesting Consortium Online PJ2T Videos

In January 2018, K8ND took his DJI Mavic Pro drones and started photographing Signal Point and the surrounding areas. More will be coming!

Although winds prevented some of the videos and photos desired, some of the best videos can be seen on YouTube at:

<https://www.youtube.com/watch?v=XCw3-Apc7Hw>

<https://www.youtube.com/watch?v=Wz8FKIkc7FA&feature=youtu.be>

<https://www.youtube.com/watch?v=7LNFT4VXdVw&feature=youtu.be>

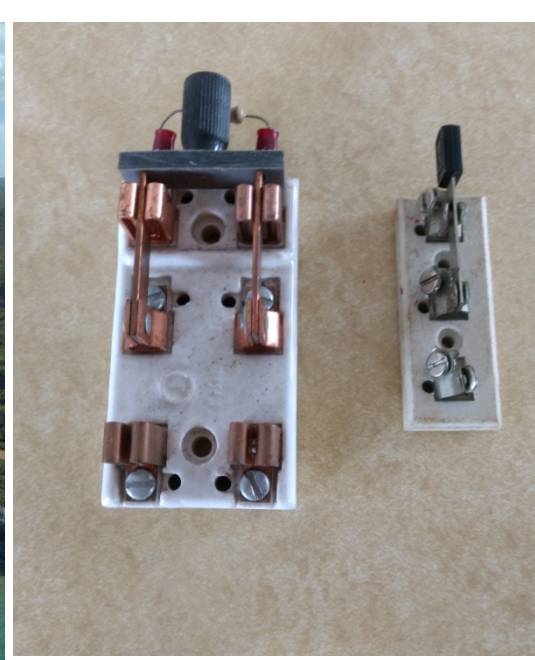
<https://www.youtube.com/watch?v=vpGCzBwRcHY>

<https://www.youtube.com/watch?v=6s3XZ4qJDul>

<https://www.youtube.com/watch?v=qrvq8E7Q2Wk&feature=youtu.be>

<https://www.youtube.com/watch?v=tx1PO9YkIb8&feature=youtu.be>





Remains of Sunset Waters Beach Resort and Santa Martha Bay.

A new supply of knife switches!

Jim W8WTS at the termination end of the Europe Beverage.

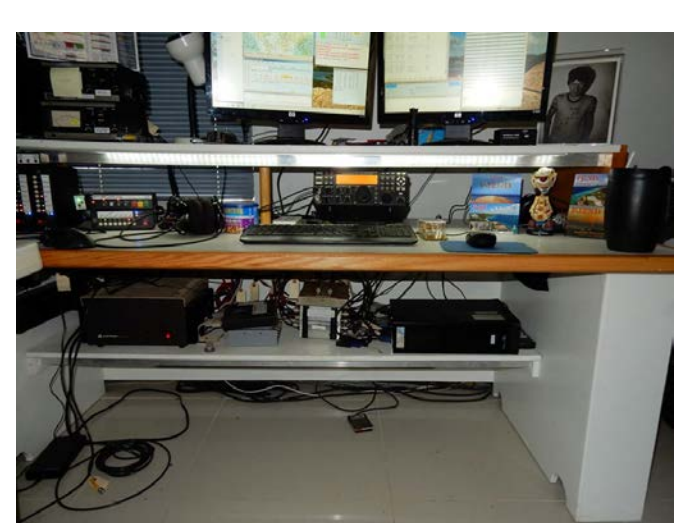


Geoff W0CG at his remote station in Idaho. Note the Geochron, which he won at Dayton 2017!

New headphone hangers at each station.

Gene KB7Q repairing the Cary LK-800 Amp.

Signal Point PJ2T from offshore.



Station 1, including understructure.



Geoff W0CG rigged for tower painting.



Visitor souvenir kits restocked.



Geoff W0CG / PJ2DX with Al W1FJ with the trophy he and five other ham operators won from Curacao in the CQWW CW Contest precisely 50 years ago when they inaugurated competitive radio operating from Curacao.



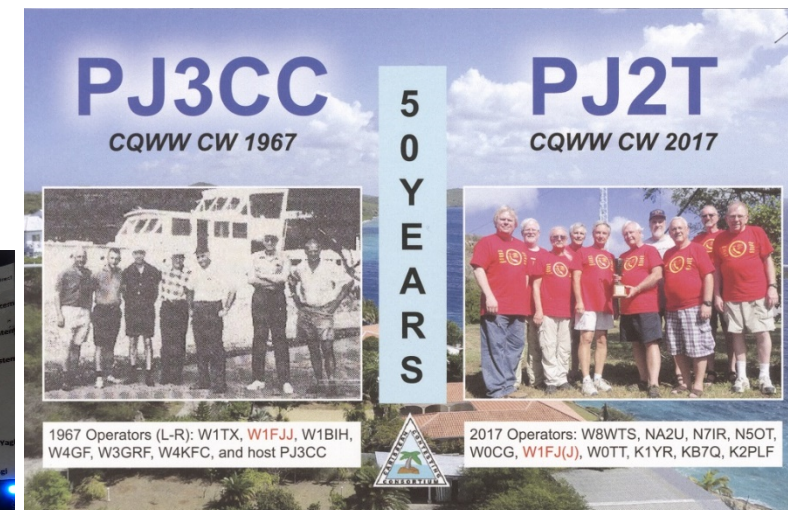
Geoff W0CG rigged for tower painting.



Antenna switching.



John Shovic's 'Project Curacao 2' boxes tested in June 2017.



The commemorative QSL for the 50 year celebration.

The tower at CSS, the business owned by Ke-Chi PJ2KC. The PJ2T/PJ2A Skimmer Server antenna is near the top.



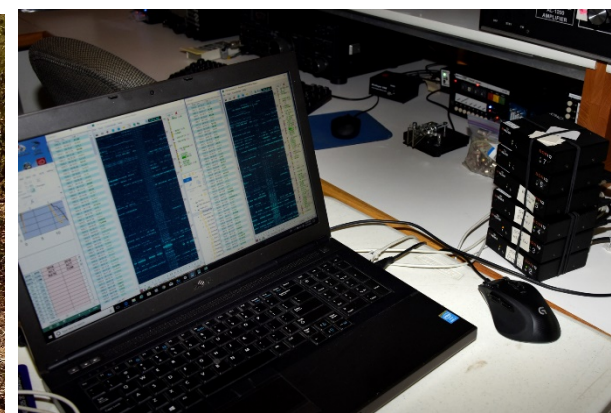
Jim W8WTS on the USA/JA tower, finding and replacing the blown-out PL-259 barrel on the 80-meter wire beam.



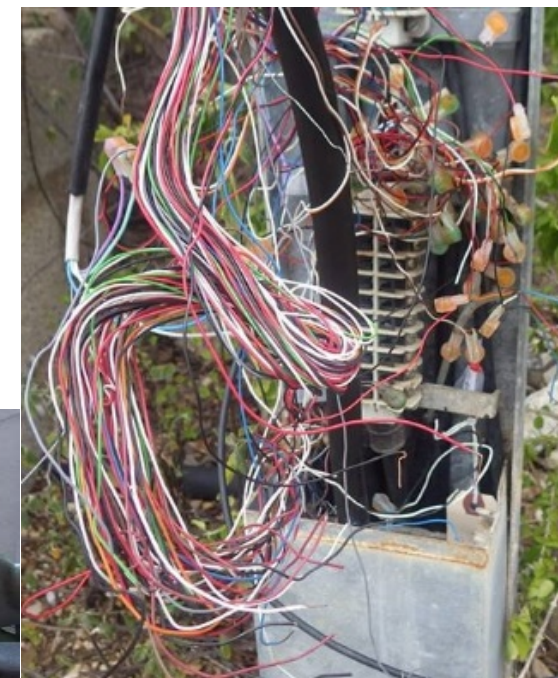
The blown-out PL-259 barrel which caused intermittent failure of the 2-element 80-meter wire beam pointed at the USA.



Jim W8WTS installing DX Engineering 4-Square feed.



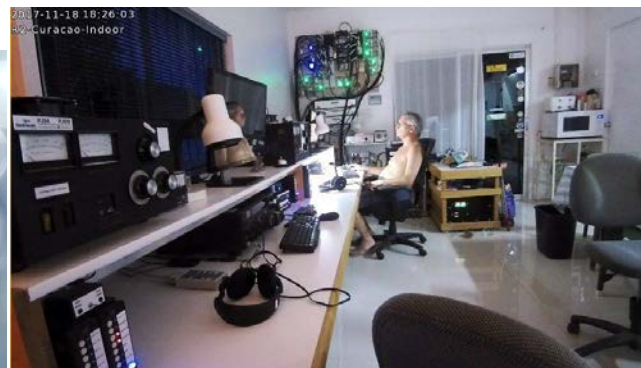
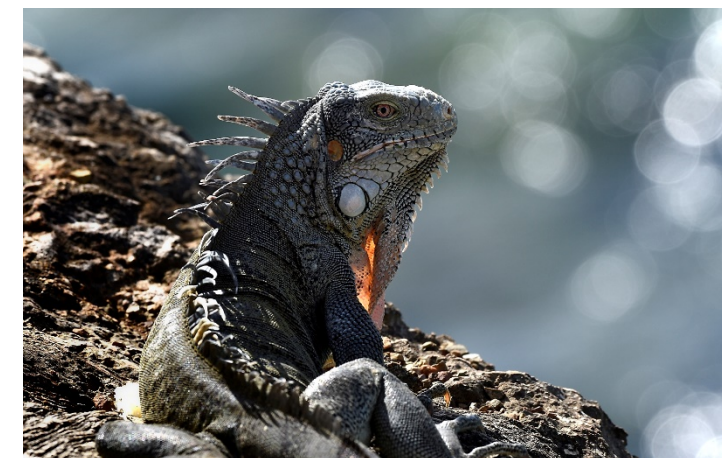
CW Skimmers in use during CQWW 160 CW.



This is the telephone junction box in the Signal Point PJ2T neighborhood. The station phone and DSL try to go into there and out the other side.



Steve, The Radio Cat, continues to keep track of things at Signal Point PJ2T.



Geoff W0CG at the station before the arrival of the CQWW CW crowd.



The PJ2T Ridge Tower

2018 PJ2T Station Report

